

# WM-E 2SL<sup>®</sup>

## 4G LTE Cat.4 modem for electricity meters

Wireless 4G communication modem that has been designed specifically for the automatized remote readout of electricity meters.

You can save money by using our modem because furthermore there is no need for manual readout of the meter systems.

The device is installable into the enclosure of the meter and it is connectable through its RJ45 (RS232) connector.

The device answers the „Pull” requests of the HES center by transparent data sending through the wireless network.

Suitable for remote readout of registers and consumption data of the connected electricity meters, download of load profile.

The modem is configurable by our WM-E Term<sup>®</sup> software.

### Main features

- Supporting the 4G LTE networks - 3G/2G „fallback”
- It can be assembled into the meter’s enclosure and fastened securely (sealed and separated from meter)
- Design & connectivity meets with meter standards
- Compatibility with: Genius<sup>®</sup> MK6N, EMDI<sup>®</sup> MK6, Landis Gyr<sup>®</sup> E550, Actaris<sup>®</sup> SL7000 type electricity meters, PREMIER<sup>®</sup> series, APEC3-CT<sup>®</sup> electricity meters
- DC power supply from the metrology
- RS232 transparent data connection (RJ45)
- micro-USB port (for configuration)
- „Pull” data sending (for HES request)
- Immediate alarm- and SMS notification
- Remote & safe firmware updates
- Downloadable WM-E Term<sup>®</sup> configuration tool
- Supercapacitor (against power outages, SNMP trap)



### Application

- Utility companies
- Meter data transmission to HES
- Smart metering
- Industrial measurement

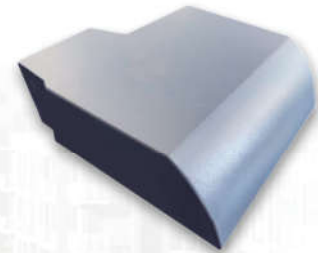
## Design and outfit

- The modem is installable into the meter enclosure
- RS232 interface connection (RJ45 connector)
- DC power supply by the meter
- Supercapacitor feature with notification (SNMP trap)



## Compatibility

- Genius<sup>®</sup> MK6N, EDMI<sup>®</sup>, Landis+Gyr<sup>®</sup> E550, Actaris<sup>®</sup> SL7000 electricity meters, PREMIER<sup>®</sup> series, APEC3-CT electricity meters of Smart Meters Technologies<sup>®</sup>

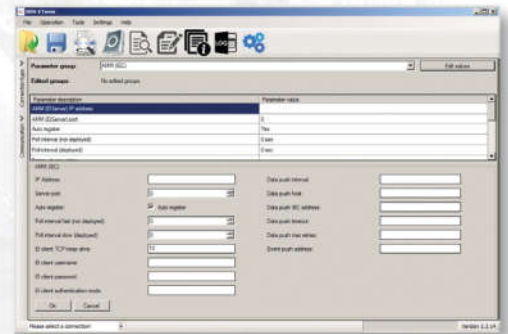


## Operation

- EC 62056-21 protocol, transparent data transmission
- „Pull“ data sending (for HES request)
- Immediate notification, SMS messages

## Accessories

- Optional RJ45 cable (for meter connection/configuration)
- Optional SMA antenna (50 Ohm) - upon request
- WM-E Term<sup>®</sup> configuration software



## Technical details

WM-E2SL <sup>®</sup>		4G LTE Cat.4
<b>Power Voltage</b>		• 5-12V DC +5%/ -5% (via RJ45 interface)
<b>Power Current / Consumption</b>		• 400mA @ 5 V DC / Max. consumption: 2W @ 10V DC
<b>Communication module</b>	Mobile Standards	• LTE Cat.4 4G - 3G/2G "fallback"
	Modem type	• Telit LE910C4-EU
	Frequency (MHz)	• GSM/GPRS: B3(1800), B8(900) • UMTS: B1(2100), B3(1800), B8(900) • LTE: B1(2100), B3(1800), B7(2600), B8(900), B20(800), B28A(700)
	Speed (DL/UL)	• LTE Cat.4 release 9: 150/50 Mbps • 3G: HSPA+ • 2G
	SIM card slot	• mini SIM card slot
Antenna connector	• 4G (SMA, 50 Ohm)	
<b>Compatibility</b>	Meter type	• Genius <sup>®</sup> MK6N electricity meters • EDMI <sup>®</sup> MK6 electricity meters • Landis+Gyr <sup>®</sup> E550 electricity meters • Actaris <sup>®</sup> SL7000 electricity meters • PREMIER <sup>®</sup> meter series • APEC3-CT electricity meters of Smart Meters Technologies <sup>®</sup>
<b>Interfaces</b>	Connectors	• RJ45 (RS232 compatible) data connection • Power supplied by meter (DC power)
<b>Operation</b>	Protocol / Data send	• EN 62056-21, Mode C - from 300-9600 baud, up to 115 200 baud serial data speed • „Pull“ data sending • Auto/manual network technology selection
	Notification	• Immediate alarm notification (in case of power outage - SNMP trap supported)
	Configuration	• WM-E Term <sup>®</sup> tool (local/mass parameter configuration, local/mass firmware updates) • SNMPv3 support
<b>Protection</b>	Indication	• 3 status LEDs
<b>Protection</b>	Supercapacitor	• Presented (soldered on PCB, against power outage)
<b>Environment</b>	Operating / Storage	• -25°C to +60°C at 95% rel.humidity • -25°C to +70°C at 95% rel.humidity
<b>Construction</b>	Prod. Life expectancy	• 10 years
	Enclosure	• IP21 plastic transparent case, fits to meter
	Dimensions / Weight	• 86 x 86 x 30mm (without antenna and connector) • 130gr



The images on the data sheet are for illustration purposes only. WM Systems LLC. cannot be held liable for erroneous information on the data sheet. The announced data are subject to change without notice.

The details on the data sheet are for general information purposes only. For more details, please contact us.